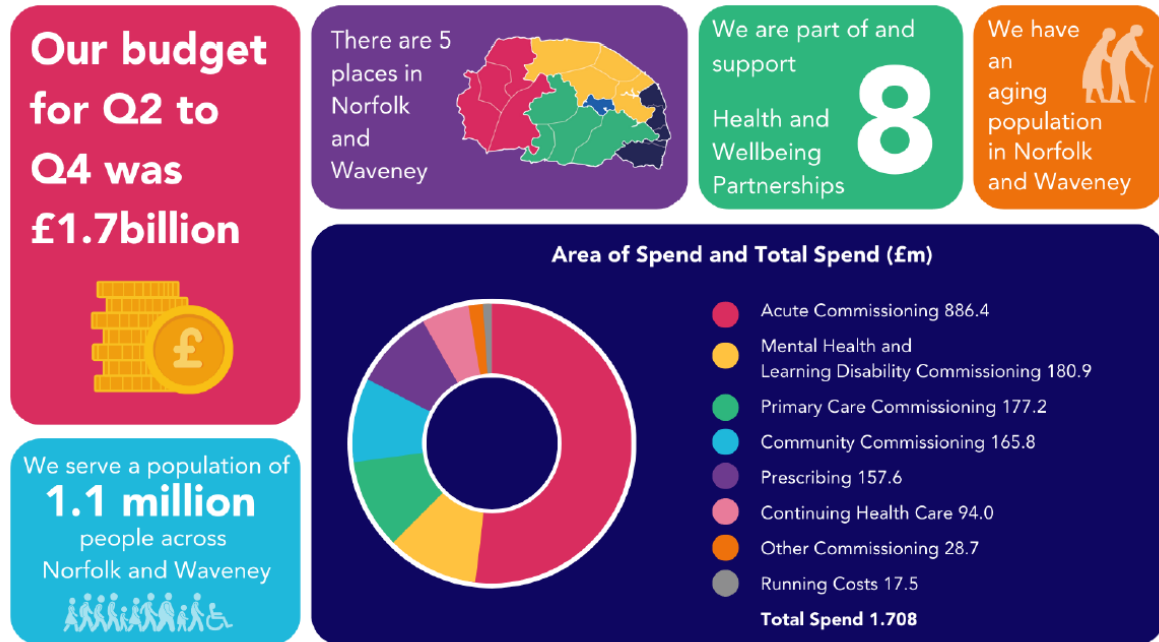


# NHS Norfolk and Waveney Annual Report – summary

1 July – 31 March 2022-23

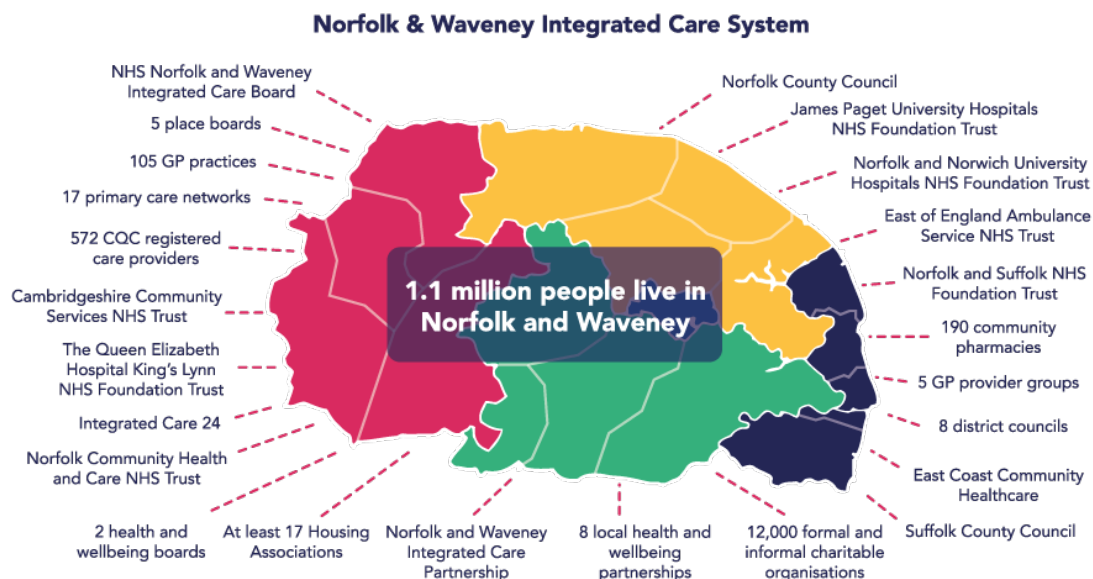
## Key facts and figures at a glance

Take a look at the key facts and figures below, including budget and population details.



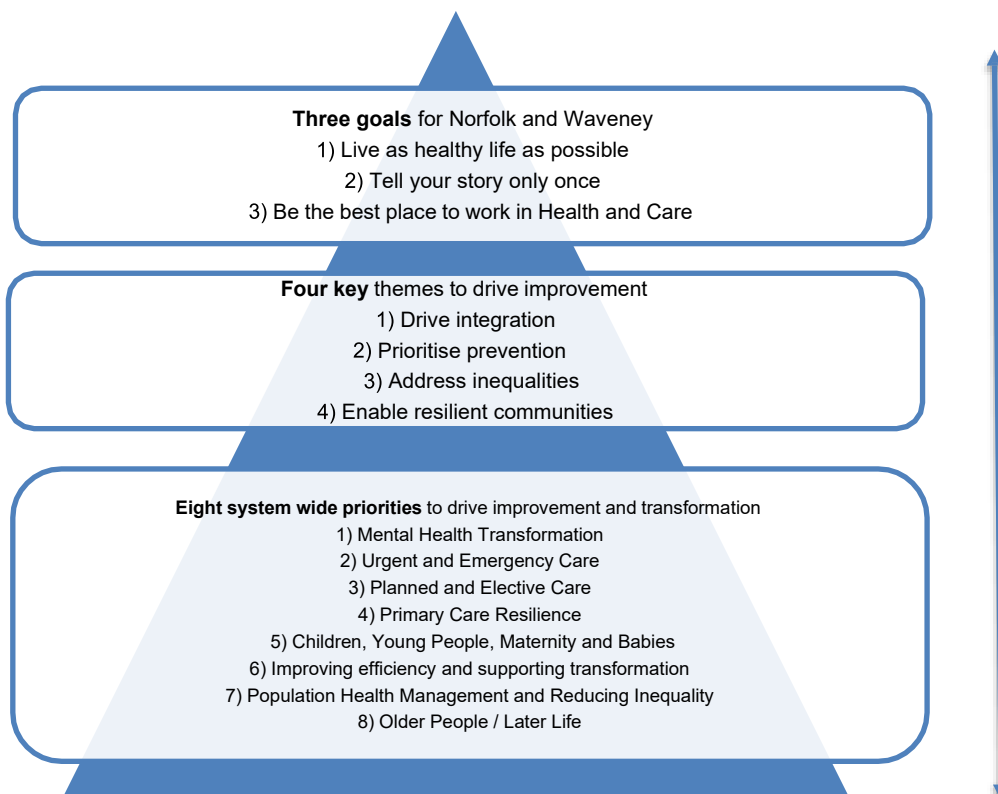
## Our population

The map below shows a summary of Norfolk and Waveney ICS, including a summary of partner organisations who make up our health and care system.



## System goals, themes and ambitions

In summary, our system goals, themes and ambitions are interlinked as follows:



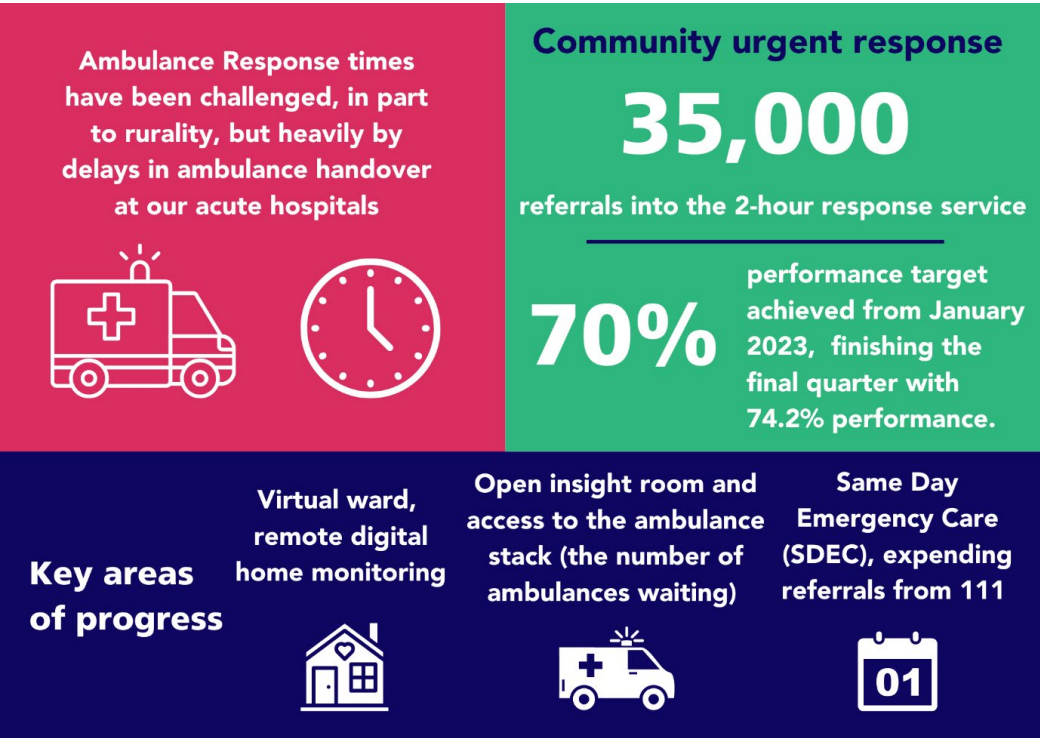
## Our eight priorities

We've summarised details of each of the eight system wide priorities in the graphics below.

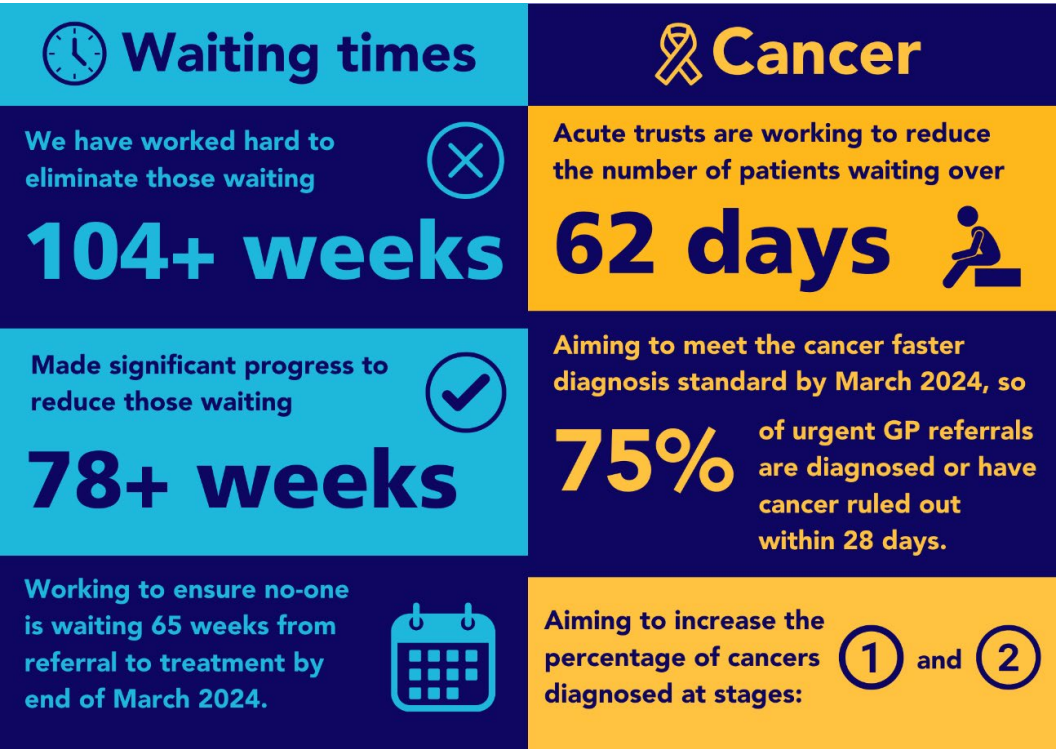
### Mental Health Transformation



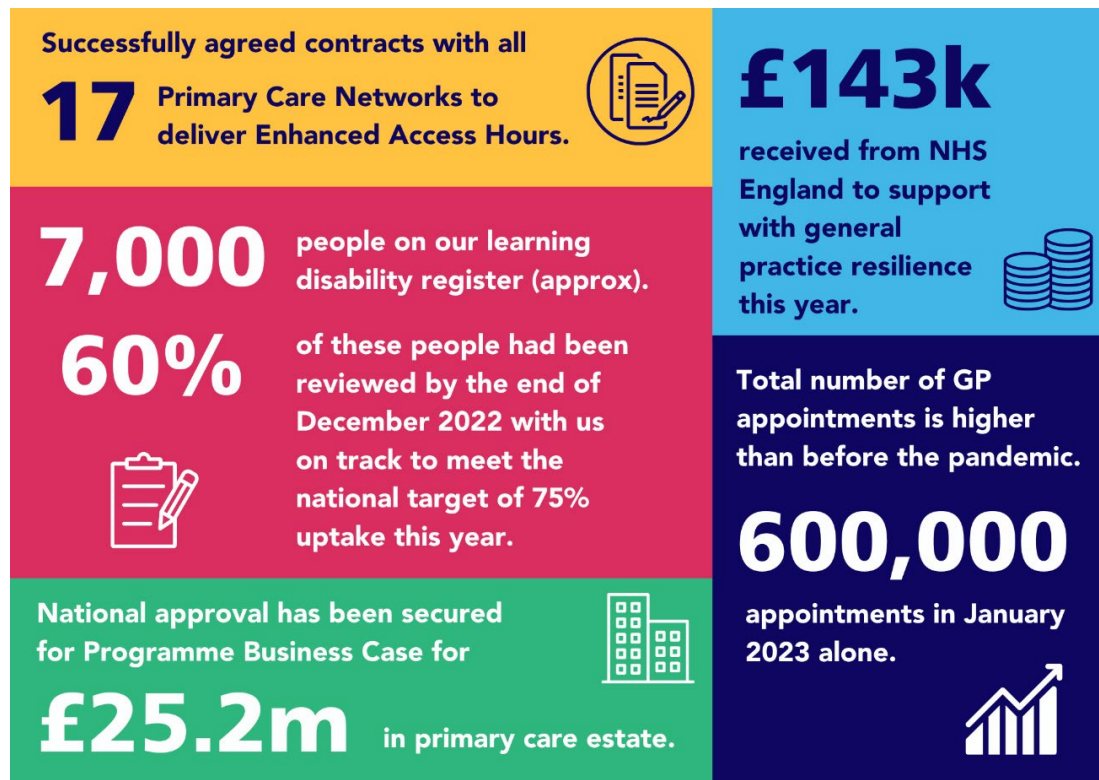
### Urgent and emergency care



### Planned and elective care



## Primary Care and Resilience

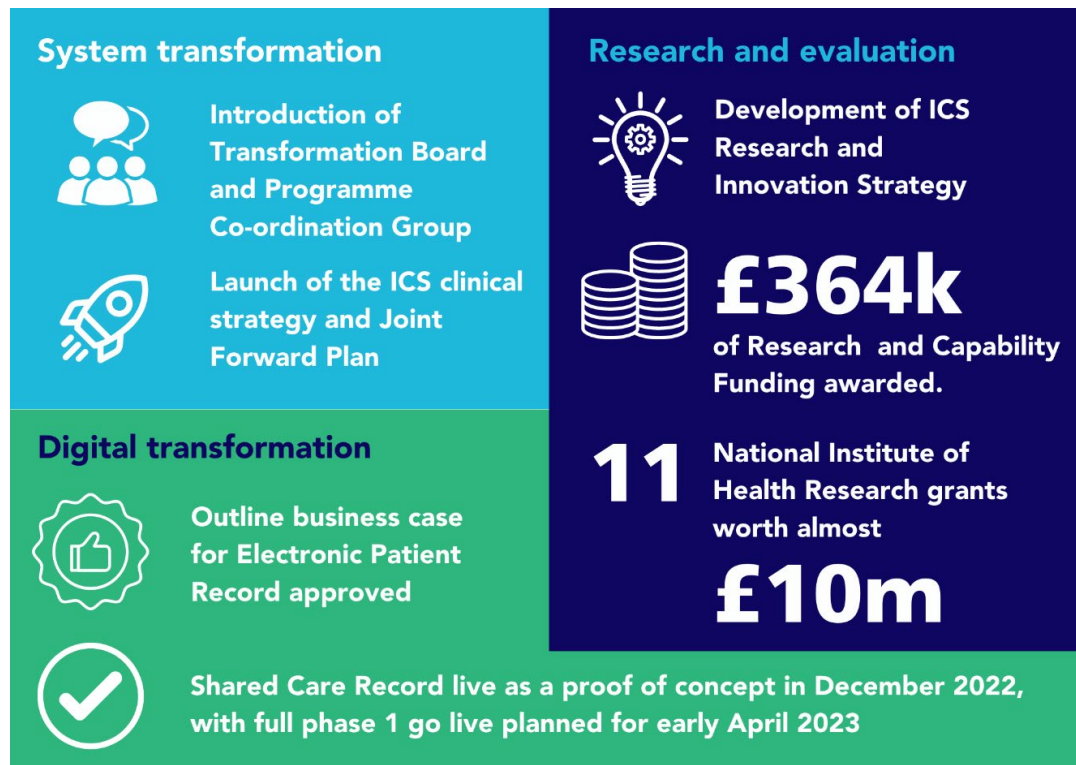


## Children, Young People, Maternity and Babies

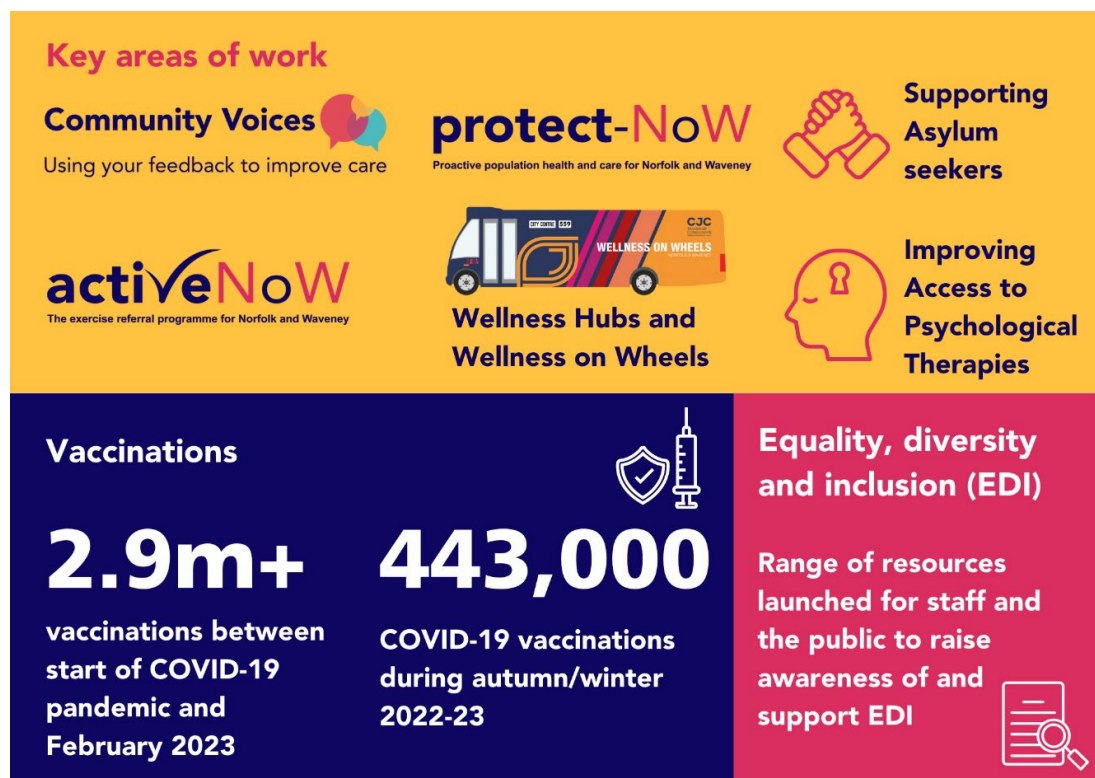




## Improving efficiency and supporting transformation



## Population Health Management and Reducing Health Inequalities



# Older People / Later Life

|  |  |
|--|--|
| <p>New priority</p>   |  <p>Includes a great deal of clinical transformation work</p>   |
| <p>Aiming to:</p> <div>  <p>prevent unnecessary hospital admission</p> </div> <div>  <p>support independence</p> </div> <div>  <p>ensure older people receive the same high-quality care in more appropriate settings</p> </div> | <div> <p>Later Life Board developed to bring together key organisations</p>  </div> <div> <p>Seeking opportunities for further integration and coordination of services to improve outcomes</p>  </div> |